



# North East Cambridge Area Action Plan

## Policies Map

### Proposed Submission

Regulation 19 of the Town and Country Planning (Local Planning)  
(England) Regulations 2012

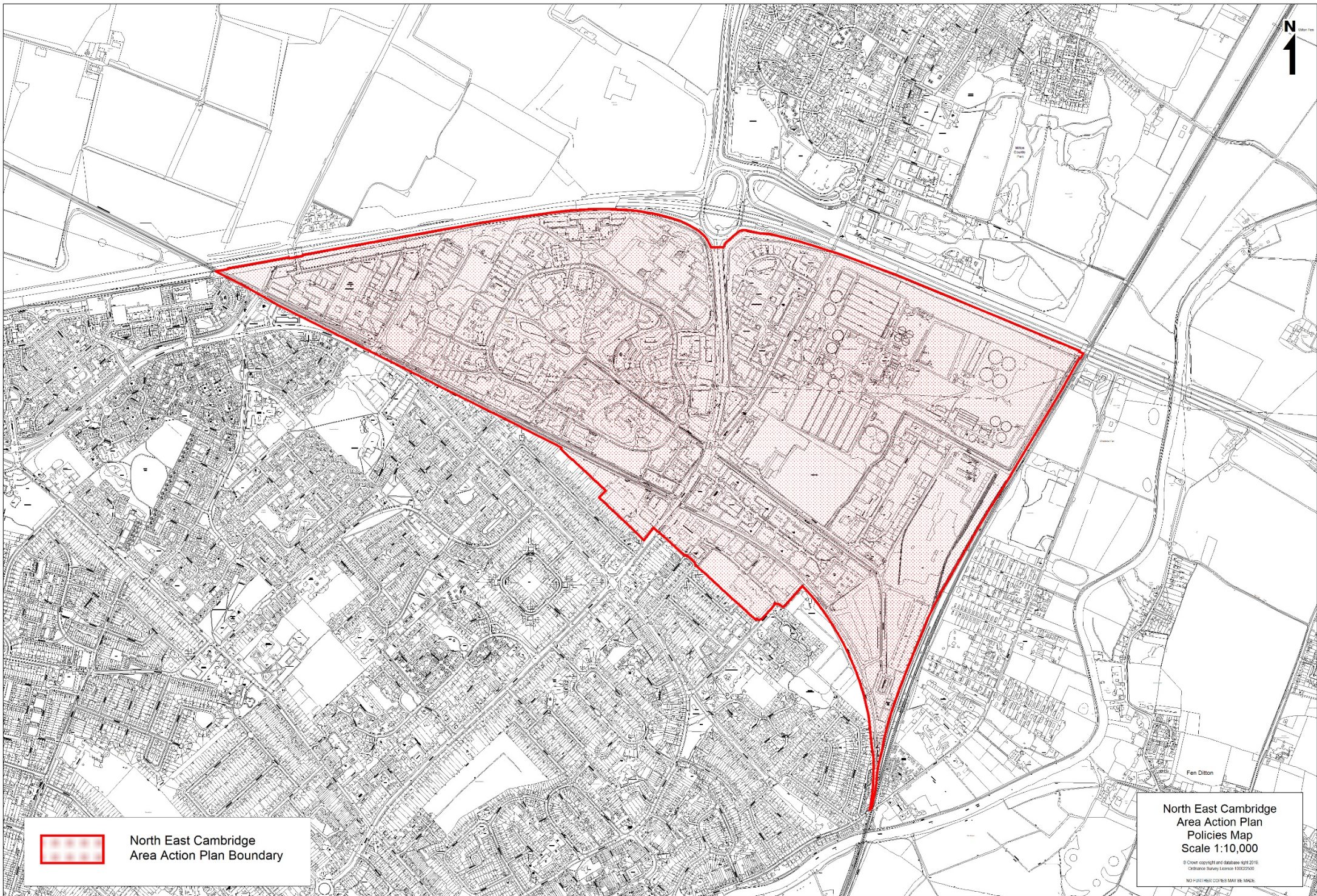
Greater Cambridge Planning Service

November 2021

The National Planning Policy Framework (NPPF) requires land-use designations and allocations to be identified on a policies map. Planning Practice Guidance states that the policies map should illustrate geographically the policies in the plan and be reproduced from, or based on, an Ordnance Survey map. If the adoption of a Development Plan Document (such as the North East Cambridge AAP) would result in changes to a previously adopted policies map, when the plan is submitted for examination, an up to date submission policies map should also be submitted, showing how the adopted policies map would be changed as a result of the new plan.

In accordance with the requirements above, this policies map sets out the proposed amendments from the adopted policies map for the Cambridge Local Plan (2018) and South Cambridgeshire Local Plan (2018).





North East Cambridge  
Area Action Plan Boundary

North East Cambridge  
Area Action Plan  
Policies Map  
Scale 1:10,000

© Crown copyright and database right 2016  
Ordnance Survey Licence 100029500  
NO PART OF THIS COPIES MAY BE MADE.